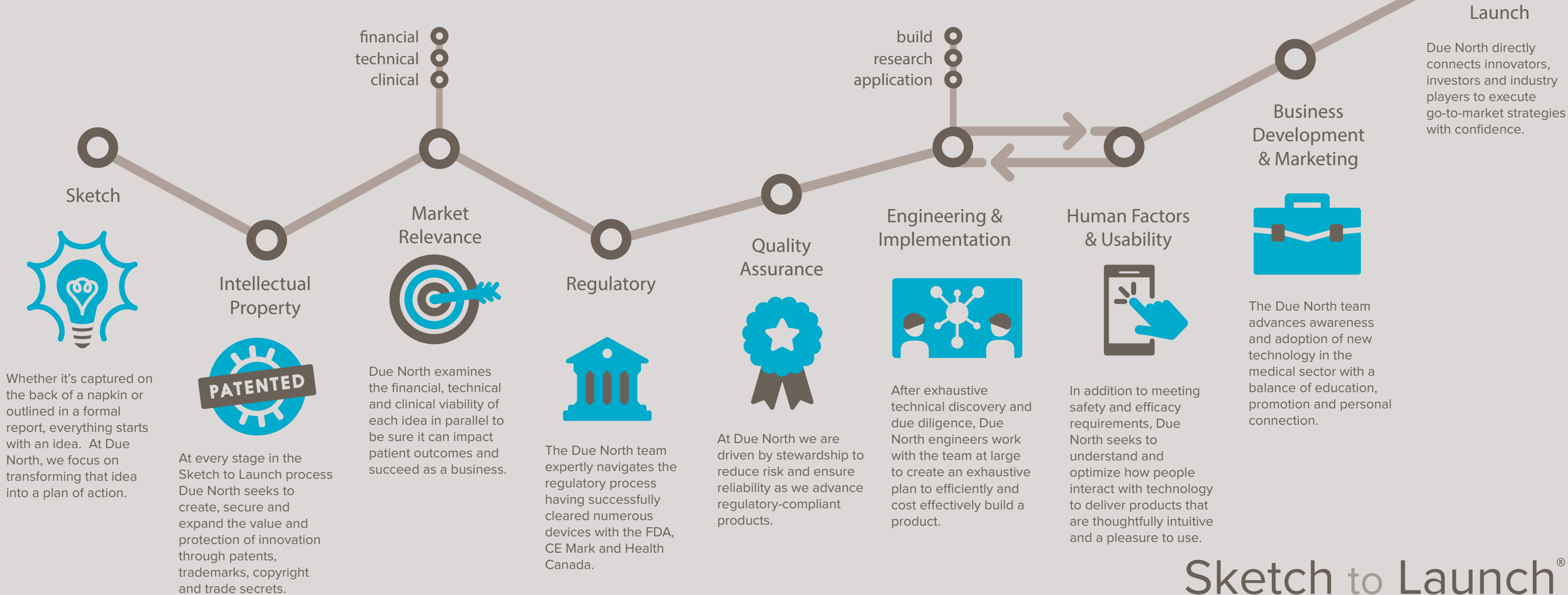




From concept to clinical application

The Sketch to Launch process by Due North is a proven method of advancing medical innovation. Specifically tailored to the unique needs in healthcare, Sketch to Launch is focused on delivering financially-viable solutions that improve the quality of patient care.

With its comprehensive end-to-end approach to commercialization, Due North integrates highly specialized, multi-disciplined professionals at every stage of development to ensure the needs of all stakeholders are met in a new product.



Sketch to Launch®

Due North and Sketch to Launch are registered trademarks of Due North, LLC.



Research is the core

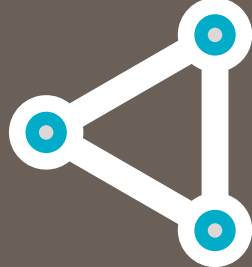
Innovative research is the foundation on which we build. Through collaboration with Due North novel ideas become first-in-class products that change the face of healthcare.

IP drives value

Leveraging business and clinical expertise Due North professionals have a proven track record of increasing company worth through the development and protection of market-relevant intellectual property.

Learn on regulatory expertise

With over 60 FDA-cleared medical products to our credit, we offer an unparalleled level of skill moving innovation out of the lab and into clinical practice.



We navigate success

Offering an integrated, end-to-end approach to advancing safe and cost-effective medical solutions, Due North is with you from Sketch to Launch.

www.sketchtolaunch.com